

## Craftsmanship

Our award-winning team of artisans has decades of experience handcrafting each fixture using traditional techniques and authentic tools. We are dedicated to selecting only the finest materials and meticulously examining every detail to guarantee top-notch quality.

## Production

Scofield fixtures are never produced in bulk. Each historic lighting design is handmade in-house using original tools, methods, and finishes. These ancient practices allow us to produce strong, durable lighting, designed to last.

## Finishing

All Scofield designs are authentic reproductions made from copper, tin, or wood and finished in either a patina, wax, or paint. As with all hand-applied finishes, variations can occur.

### Copper Finishes

Scofield fixtures made from copper are ideal for both interior and exterior projects and are finished with a “living finish”, also called a live patina. Patina offers a unique perspective on the beauty of metal, showcasing its true essence through an array of shades and patterns. Unlike paint, patina allows the metal to shine through to be appreciated in its natural state. Over time, the finish will naturally change into various shades, influenced by factors like weather, touch, time, and exposure to the environment. Copper fixtures are finished in four standard options including:



#### Natural Copper

Raw copper with a lightly brushed, non-directional finish.



#### Bronzed Copper

Starting with a matte copper surface, oxidizers are applied to darken the copper to a deep brown-black finish.



#### Oxidized Copper

Starting with a natural copper surface, oxidizers and heat are applied simultaneously to accelerate the development of protective verdigris in a range of green and white tones.

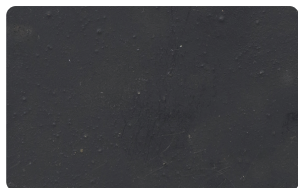


#### Leaded Copper

A mottled silver lead coating applied over copper creating a durable grayish-white finish.

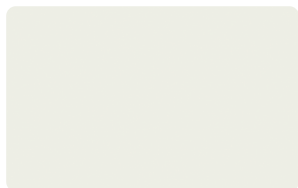
## Tin Finishes

Scofield fixtures fabricated from tin are specifically designed for indoor use and treated with rust-resistant aging techniques. Fixtures are intentionally soaked in a mixture of acids and stripped of a coating to reveal the natural metal. Afterward, they are dipped in blackened steel and left to air dry. A combination of dark wax and natural dirt is applied to the fixture to add texture and unique character.



### Aged Tin

A rich, black-brown finish with light texture is applied to a natural tin base and sealed with hand applied wax.



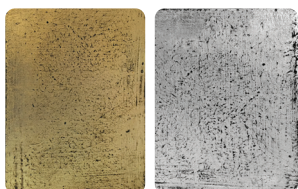
### Painted Tin

Metal components of tin fixtures are hand painted with Benjamin Moore premium metal-safe interior paint revealing unique, visible strokes. *Shown with Vanilla Milkshake paint.*



### Painted Wood

Select Scofield tin fixtures include wooden elements that are hand-painted using historic and fade-resistant Genuine Old-Fashioned Milk Paint. *Shown with Snow White paint.*



### Gilding

23K Yellow and White Gold Leafing is hand gilded to select tin fixtures adding an authentic decorative accent.

## UL Certification



All fixtures are electrified with virtually invisible wiring, UL tested, certified, and marked for damp, dry, or wet locations.

## Care & Maintenance

Gently clean all Scofield Lighting fixtures with a soft cloth.

## Samples

We offer, for purchase, a comprehensive binder of standard metal and paint finishes. This binder can be fully rebated against purchases, subject to certain limitations. Individual samples of standard and custom finishes are available for approval at a nominal cost.

## Distribution

Scofield Lighting fixtures are distributed by exclusive distributors throughout the nation assisting with pricing, lead times, and showroom locations.