

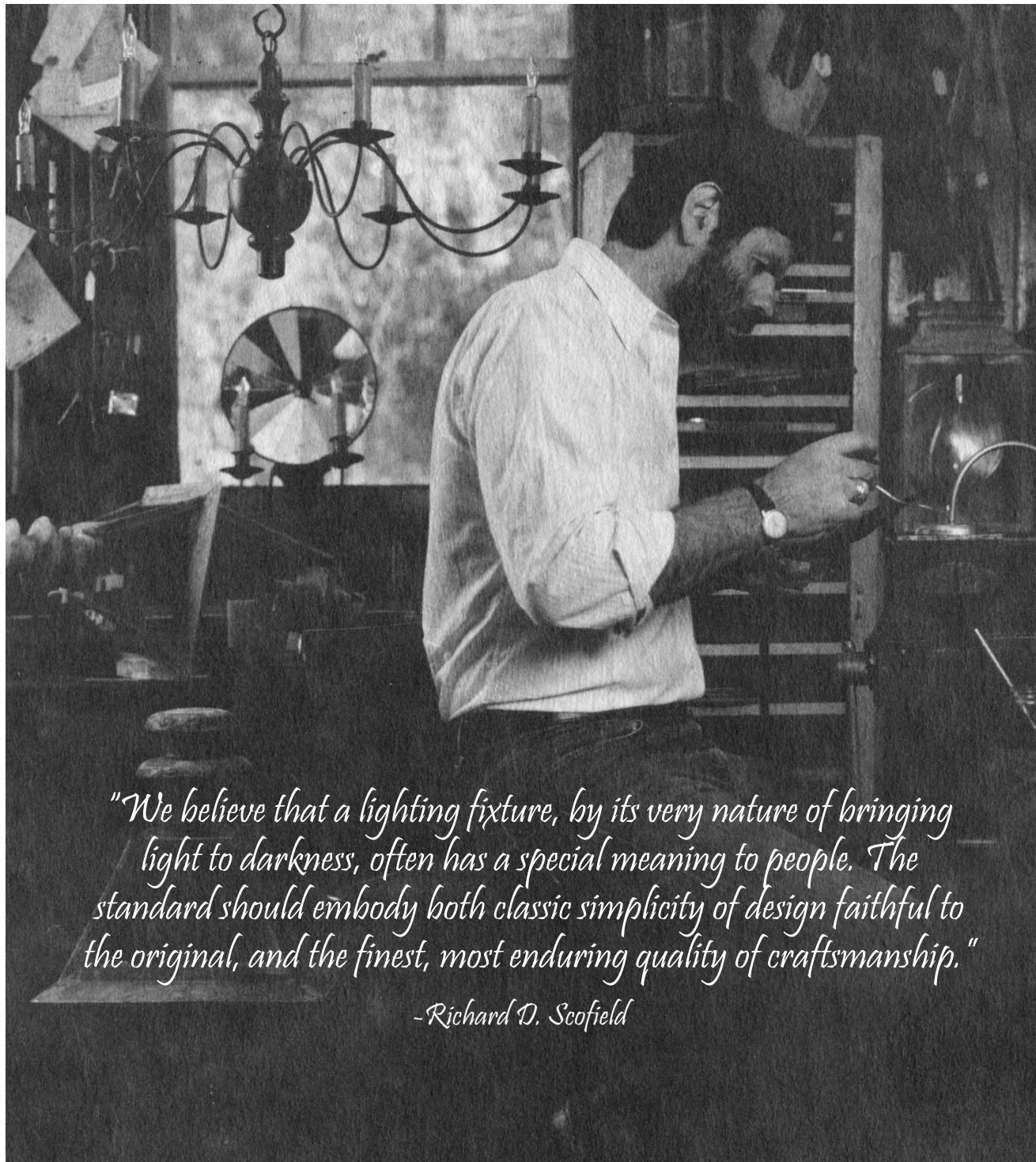


SCOFIELD LIGHTING
EST. 1974

ANNIVERSARY COLLECTION 2024



Scofield Lighting was originally founded in 1974 by master craftsman, Richard D. Scofield. He was a scholar in the field of historic lighting, devoting years studying 17th - 19th century European and American lighting fixtures. Over the years his skills were so well regarded, he was granted access to various colonial museum collections. His appreciation for high quality workmanship and dedication to authenticity helped build what Scofield Lighting is today - traditionally inspired reproductions, handcrafted from copper, tin, and wood.



"We believe that a lighting fixture, by its very nature of bringing light to darkness, often has a special meaning to people. The standard should embody both classic simplicity of design faithful to the original, and the finest, most enduring quality of craftsmanship."

-Richard D. Scofield

Table of Contents

Ceiling Lighting2 - 12

- Flush Mount.4 - 5
- Chandelier6 - 7
- Pendant8 - 9
- Hanging Lantern10 - 12

Wall Lighting13 - 17

- Lantern14 - 15
- Sconce.16 - 17

Options18 - 24

- Finishes20 - 21
- Glass & Reflectors22
- Candle Sleeves23
- Shades & Clusters23
- Mounting24



Celebrating 50 Years of Excellence. The Anniversary Collection.

Today, Scofield's lifelong passion for the simplistic style and elegance of early lighting continued in the hands of a new generation of artisans at Heritage Metalworks. Founder and Owner, Matt White, shared the same passion for high-quality design and a focus on traditional techniques as Scofield.

50 years after opening the doors, we honor Scofield with 13 new handcrafted lighting fixtures to add to the versatile line. Every new piece is either an adaption from a Scofield fixture or a custom project out of the Scofield archives, using the same traditional techniques, premium materials, and parts that already exist. This collection was developed to fill a void in design that the Scofield line didn't offer. Designs are slightly unique using asymmetric lines, mixed metals, and geometric shapes, intended for a diverse range of interior and exterior projects.

Join us in celebrating Scofield with extraordinary lighting from the Anniversary Collection.

"Designs are made to not only be historically accurate and functional, but a little edgier to fit into today's modern lifestyle."

- Matt White, Founder of Heritage Metalworks



CEILING LIGHTING



Stamford Flush Mount

This fully enclosed octagonal ceiling light is an adaptation of the perfectly symmetrical Square and Rectangular Flush Mounts, made with asymmetric framed windows, balanced beautifully with solid brass spheres.



Shown in large with a bronzed copper finish and frosted glass.

SPECIFICATIONS

- All sizes UL listed for Dry location (may comply with Damp location when surface mounted to covered ceiling away from rain or sprinklers)
- 40-watt max (E26) socket
- 4" octagonal junction box

Small

- 11" w x 4.75" h
- Two Lamp

Large

- 13" w x 5" h
- Two Lamp

Materials

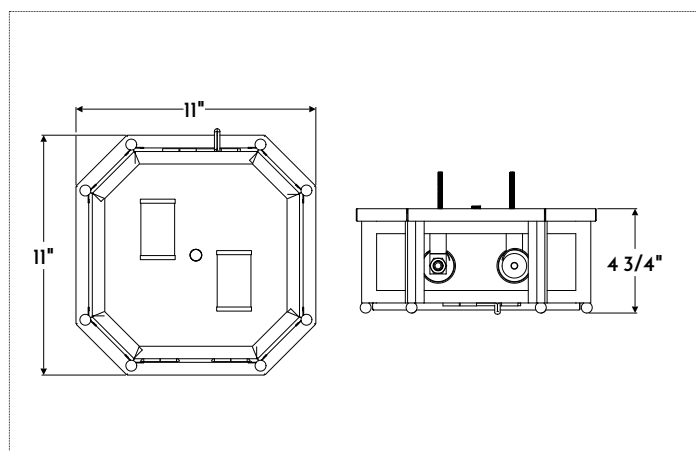
- Copper

Finishes

- NACP, BZCP, OXCP, BRCP
- BLAQ, BZAO

Other Options

- Plain, Seeded, Frosted, Opal, or Restoration Glass
- Custom materials and finishes available upon request



Shown with small dimensions



(610) 518-3999



Greenwich Flush Mount

This artistic adaptation of the Square Flush Mount is handcrafted with geometric winged walls, decorated with gilded solid brass spheres. As an added feature, subtle fretwork is overlaid to the base, elevating the design.



Shown in large with a black lacquer finish and yellow gold leaf.

SPECIFICATIONS

- All sizes UL listed for Dry location (may comply with Damp location when surface mounted to covered ceiling away from rain or sprinklers)
- 40-watt max (E26) socket
- 4" octagonal junction box

Small

- 13.25" w x 5" h
- Two Lamp

Large

- 15.5" w x 5.5" h
- Two Lamp

Materials

- Copper

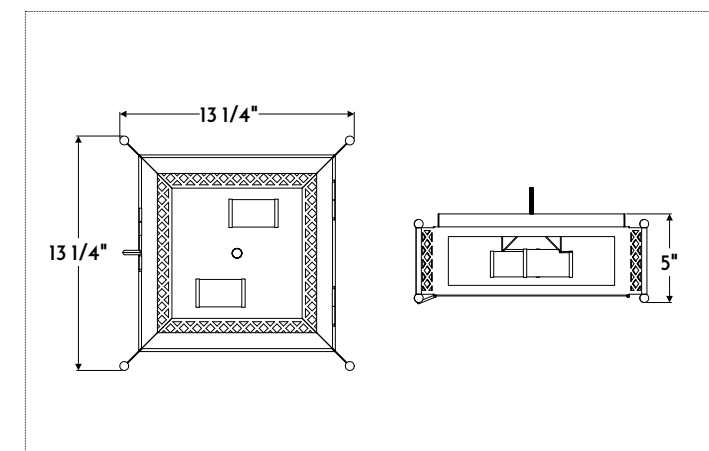
Finishes

- NACP, BZCP, OXCP, BRCP
- BLAQ, BZAO
- Gilded *

Other Options

- Available with or without Yellow or White Gold Leaf
- Plain, Seeded, Frosted, Opal, or Restoration Glass
- Custom materials and finishes available upon request

*Interior use only



Shown with small dimensions



(610) 518-3999

hmwpa.com



Hartford Chandelier

This bold spin-off of the French Single Tier Chandelier combines a simple, airy structure with detailed wood turnings, a spun platform, and a suspended knob, all finished with a hint of gold leaf.



Shown in medium with an aged tin finish and yellow gold leaf.

SPECIFICATIONS

- All sizes UL listed for Dry location (may comply with Damp location when surface mounted to covered ceiling away from rain or sprinklers)
- 60-watt max** candelabra (E12) socket
- Includes 5" canopy and hook
- 4" octagonal junction box

Small

- 22" w x 17.5" h
- Five Lamp

Medium

- 28" w x 20.125" h
- Six Lamp

Large

- 34" w x 22.5" h
- Eight Lamp

Materials

- Tin*

Finishes

- AGTN*
- Gilded*

Other Options

- Available with or without Yellow or White Gold Leaf
- Custom materials and finishes available upon request

*Interior use only

**Filament LED (2-6 watt) bulbs strongly recommended with optional wax sleeves

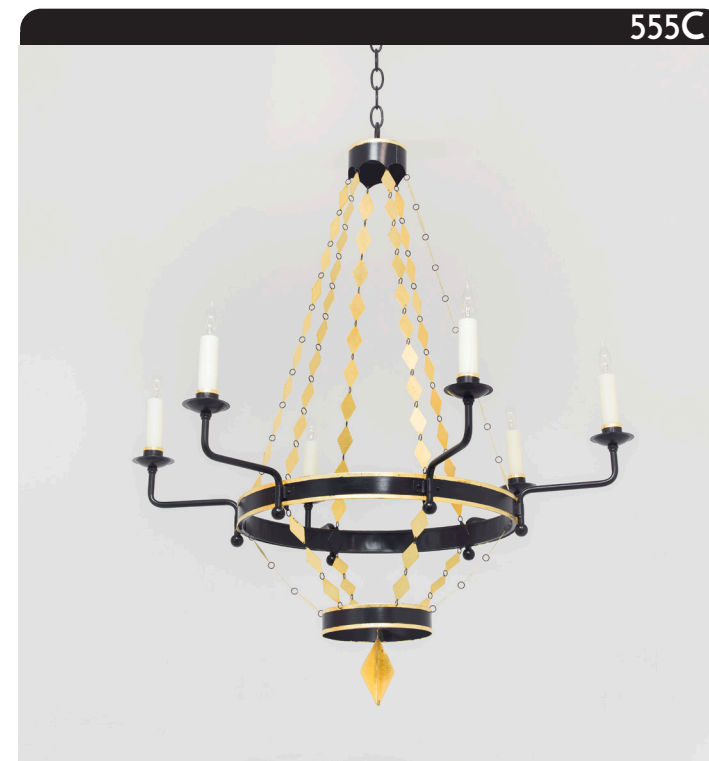


(610) 518-3999



Westport Chandelier

This elaborate diamond chained chandelier is a true piece of art, designed with an appreciation for the traditional 19th century craft. Like the Federal Chandelier, this light-weight statement piece is handmade using edgy, yet traditional details.



Shown in medium with a black lacquer finish and yellow gold leaf.

SPECIFICATIONS

- All sizes UL listed for Dry location (may comply with Damp location when surface mounted to covered ceiling away from rain or sprinklers)
- 60-watt max** candelabra (E12) socket
- Includes 5" canopy and 36" chain
- 4" octagonal junction box

Small

- 23.125" w x 27.375" h
- Five Lamp

Medium

- 28.125" w x 34.25" h
- Six Lamp

Large

- 34.125" w x 39" h
- Eight Lamp

Materials

- Tin*

Finishes

- AGTN, BLAQ
- Gilded*

Other Options

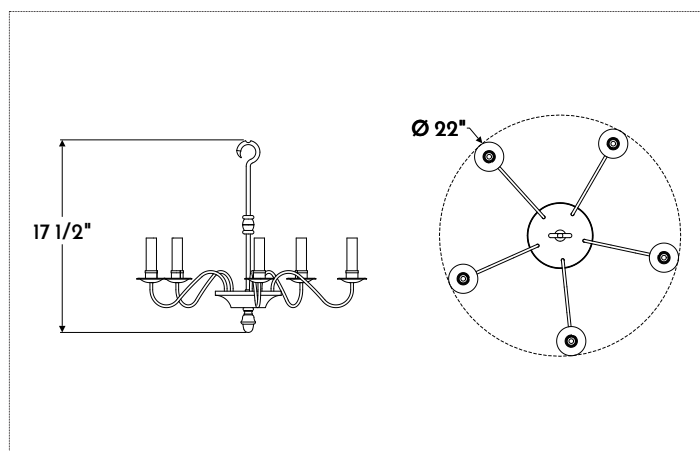
- Available with or without Yellow or White Gold Leaf
- Custom materials and finishes available upon request

*Interior use only

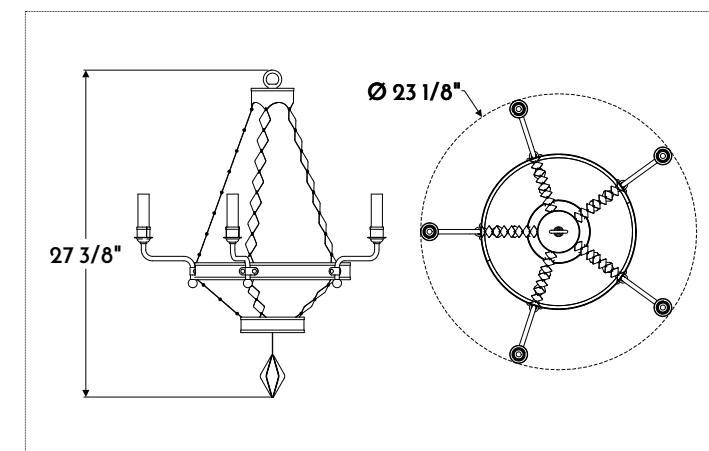
**Filament LED (2-6 watt) bulbs strongly recommended with optional wax sleeves



hmwpa.com



Shown with small dimensions

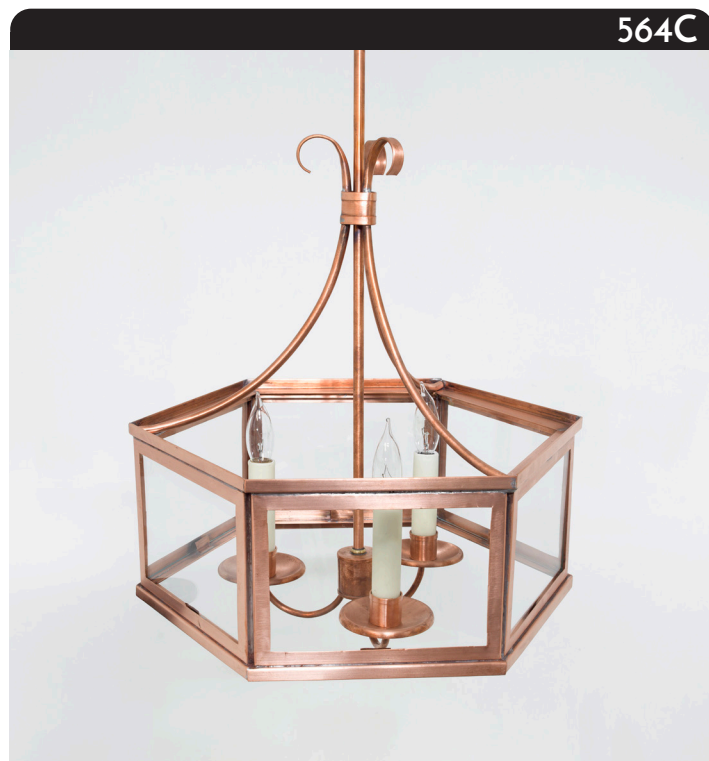


Shown with small dimensions



Easton Hanging Pendant

This traditional style hexagonal hanging pendant, adapted from the Rectangular Flush Mount, is designed to serve as a focal point, suspended by a three-arm scrolled column to redefine the ambiance of a room.



Shown in small with a natural copper finish.

SPECIFICATIONS

- All sizes UL listed for Dry location (may comply with Damp location when surface mounted to covered ceiling away from rain or sprinklers)
- 60-watt max** candelabra (E12) socket
- Includes 5" canopy and hanger column. Max 36" OAH
- 4" octagonal junction box

Small

- 14" w x 16.125" d x 18" h
- Three Lamp

Large

- 18" w x 20.75" d x 20.875" h
- Three Lamp

Materials

- Copper

Finishes

- NACP, BZCP, OXCP, BRCP
- BLAQ, BZAQ

Other Options

- Plain, Seeded, Frosted, Opal, or Restoration Glass
- Custom materials and finishes available upon request

**Filament LED (2-6 watt) bulbs strongly recommended with optional wax sleeves

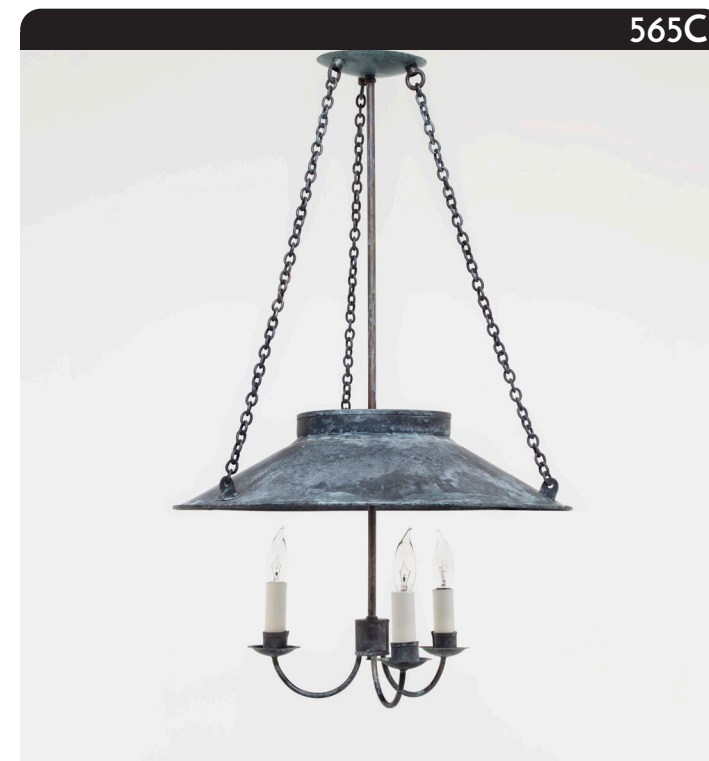


(610) 518-3999



Danbury Hanging Pendant

This colonial-style hanging pendant, inspired by the Edison Pendant, features a handspun open shade suspended by a three-lamp cluster and baby oval chain, ideal for a kitchen or island.



Shown in large with an oxidized copper finish.

SPECIFICATIONS

- All sizes UL listed for Wet location
- 60-watt max** candelabra (E12) socket
- Includes 5" canopy
- 4" octagonal junction box

Small

- 15.125" w x 24" h
- Three Lamp

Large

- 18.25" w x 28.5" h
- Three Lamp

Materials

- Copper

Finishes

- NACP, BZCP, OXCP, BRCP
- BLAQ, BZAQ

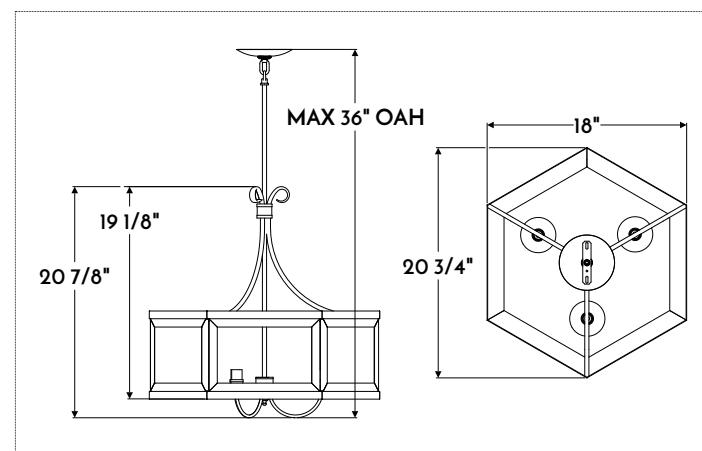
Other Options

- Custom materials and finishes available upon request

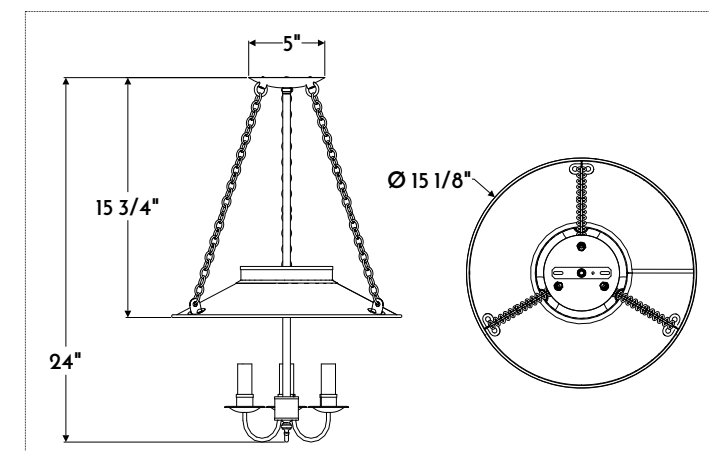
**Filament LED (2-6 watt) bulbs strongly recommended with optional wax sleeves



hmwpa.com



Shown with large dimensions



Shown with small dimensions



Southport Hanging Lantern

Straight from the Scofield archives, this adapted version of a custom fixture fabricated for the Southport Congressional Church, is inspired by the church's 19th century style architecture, and arched Gothic windows. Designed with an open top and bottom to illuminate a wide area.



Shown in medium with a bronzed copper finish.

SPECIFICATIONS

- All sizes UL listed for Dry location (may comply with Damp location when surface mounted to covered ceiling away from rain or sprinklers)
- 60-watt max** candelabra (E12) socket
- Includes 5" canopy and hanger
- 4" octagonal junction box

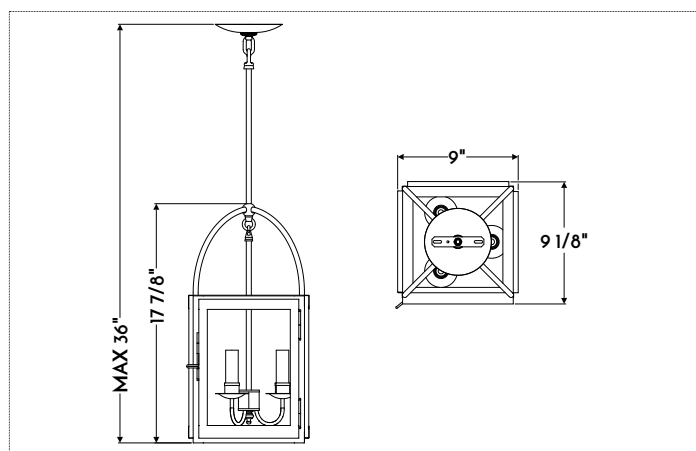
- | | |
|-------------------------------|------------------------------------|
| Small | Medium |
| • 9" w x 9.125" d x 17.875" h | • 13.75" w x 13.875" d x 27.125" h |
| • Max 36" OAH | • Max 42" OAH |
| • Three Lamp | • Three Lamp |

- | | |
|----------------------------|------------------|
| Large | Materials |
| • 20" w x 20.25" d x 38" h | • Copper |
| • Max 54" OAH | |
| • Three Lamp | |

- Finishes**
- NACP, BZCP, OXCP, BRCP
 - BLAQ, BZAO

- Other Options**
- Plain, Seeded, Frosted, Opal, or Restoration Glass
 - Custom materials and finishes available upon request

**Filament LED (2-6 watt) bulbs strongly recommended with optional wax sleeves

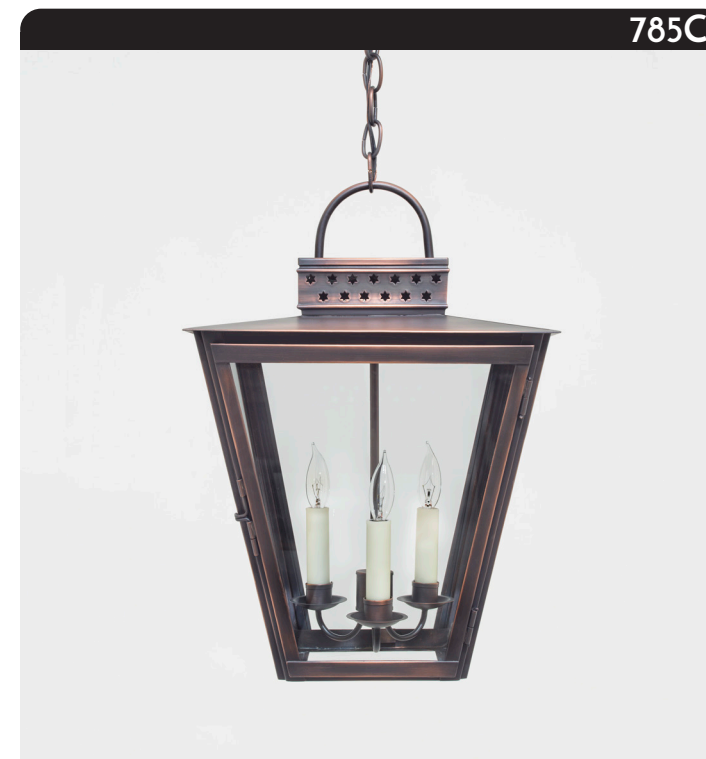


Shown with small dimensions



Mystic Hanging Lantern

This elegant, architectural fixture, adapted from the Classic Lantern, reveals distinct visual accents, surrounded by four glass panes, a slanted shade, and a unique vented chimney cap with decorative punchwork.



Shown in medium with a brushed bronzed copper finish.

SPECIFICATIONS

- All sizes UL listed for Wet location
- Includes 5" canopy and 36" chain
- 4" octagonal junction box

- Small**
- 10" w x 14" h
 - One Lamp
 - 100-watt max (E26) socket

- Large**
- 20.25" w x 27.625" h
 - Three Lamp
 - 60-watt max** candelabra (E12) socket

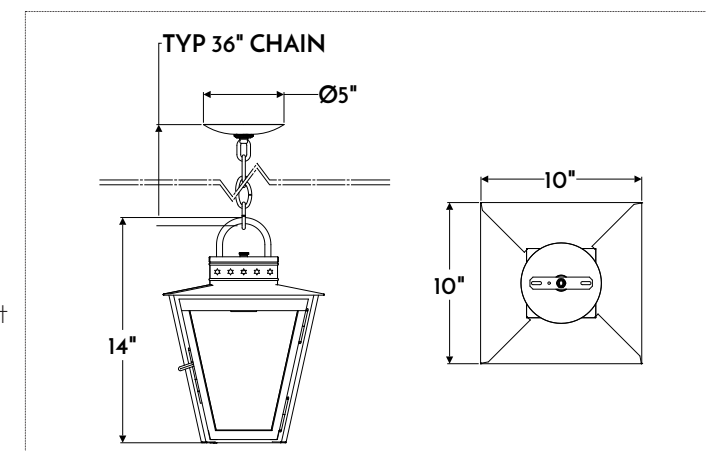
- Finishes**
- NACP, BZCP, OXCP, BRCP
 - BLAQ, BZAO

- Other Options**
- Plain, Seeded, Frosted, Opal, or Restoration Glass
 - Custom materials and finishes available upon request

**Filament LED (2-6 watt) bulbs strongly recommended with optional wax sleeves

- Medium**
- 14" w x 19.75" h
 - Three Lamp
 - 60-watt max** candelabra (E12) socket

- Materials**
- Copper



Shown with small dimensions





Bridgeport Hanging Lantern

This airy adaption of the popular English Gas Lantern is a 19th century traditional mixed-metal fixture suspended by brass chain and copper body, surrounded by 6 panes of glass.



Shown in medium with a bronzed copper finish.

SPECIFICATIONS

- All sizes UL listed for Dry location (may comply with Damp location when surface mounted to covered ceiling away from rain or sprinklers)
- Includes 5" canopy and 36" chain
- 4" octagonal junction box

Small

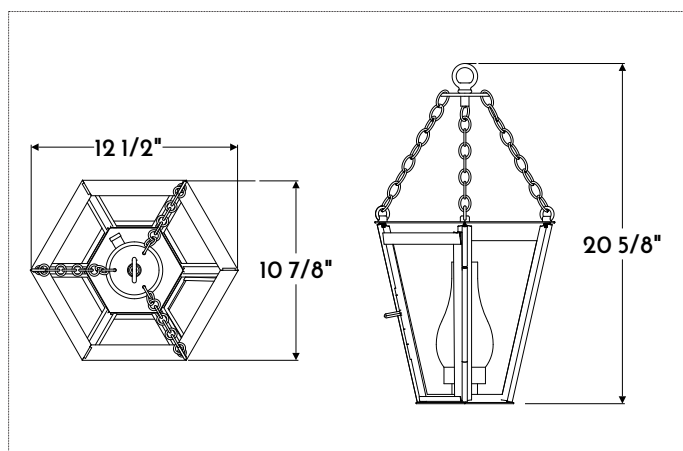
- 12.5" w x 10.875" d x 20.625" h
- One Lamp
- 100-watt max (E26) socket

Medium

- 15.625" w x 13.5" d x 24.875" h
- Three Lamp
- 60-watt max** candelabra (E12)

Large

- 18.125" w x 15.625" d x 31" h
- Three Lamp
- 60-watt max** candelabra (E12)



Shown with small dimensions

Materials

- Copper

Finishes

- NACP, BZCP, OXCP, BRCP
- BLAQ, BZAQ

Other Options

- Plain, Seeded, Frosted, Opal, or Restoration Glass
- Straight or Traditional Chimney (small size only)
- Custom materials and finishes available upon request

**Filament LED (2-6 watt) bulbs strongly recommended with optional wax sleeves



(610) 518-3999

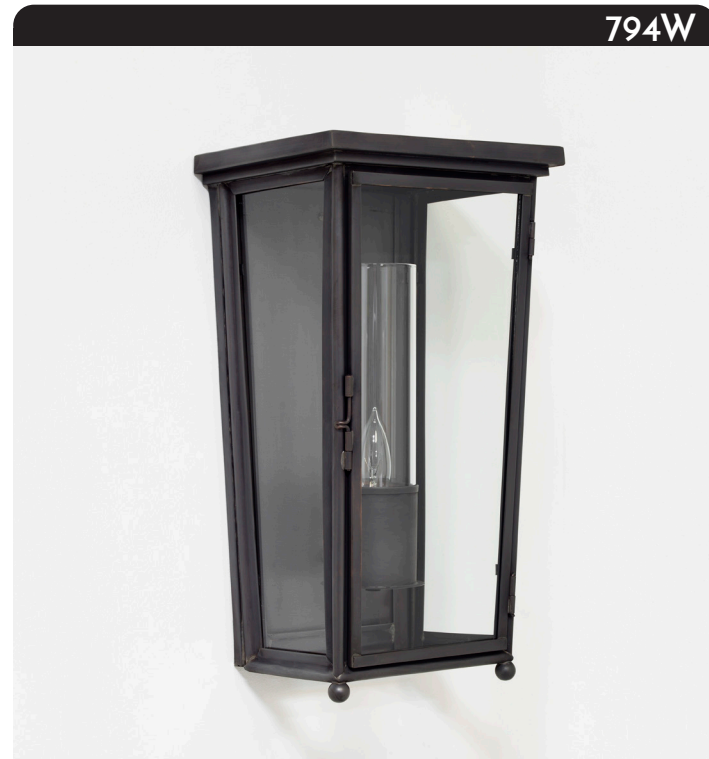
WALL LIGHTING





Waterbury Wall Lantern

This elongated wall lantern, inspired by the Boston Lantern, features a single floating lamp, enclosed with 3 panes of glass and a solid back. The handcrafted tiered flat top and open bottom allow for a versatile lighting experience ideal for any interior or exterior project.



Shown in medium with a bronzed copper finish.

SPECIFICATIONS

- All sizes UL listed for Wet location
- 100-watt max (E26) socket
- 2" x 4" junction box

Small

- 8.375" w x 7" d x 15.75" h
- One Lamp

Medium

- 10.375" w x 8" d x 18.75" h
- One Lamp

Large

- 14.375" w x 10" d x 25.875" h
- One Lamp

Materials

- Copper

Finishes

- NACP, BZCP, OXCP, BRCP
- BLAQ, BZAQ

Other Options

- Plain, Seeded, Frosted, Opal, or Restoration Glass
- Straight or Traditional Chimney
- Custom materials and finishes available upon request

**Filament LED (2-6 watt) bulbs strongly recommended with optional wax sleeves



(610) 518-3999



New Haven Wall Lantern

This closed top adaptation of the Philadelphia and French Station Lantern features direct mount solid backing with a traditional style round mirror. Candelabra(s) line the closed bottom pan, highlighting the classic details of this handcrafted fixture.



Shown in medium with a bronzed copper finish.

SPECIFICATIONS

- All sizes UL listed for Wet location
- 60-watt max** candelabra (E12) socket
- 2" x 4" junction box

Small

- 10" w x 6.75" d x 13.25" h
- One Lamp

Medium

- 12" w x 8" d x 17" h
- Two Lamp

Large

- 15.5" w x 9.75" d x 21" h
- Two Lamp

Materials

- Copper

Finishes

- NACP, BZCP, OXCP, BRCP
- BLAQ, BZAQ

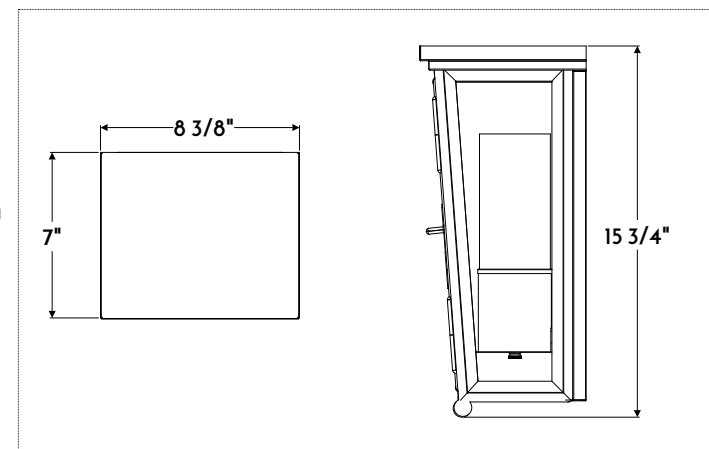
Other Options

- Plain, Seeded, Frosted, Opal, or Restoration Glass
- Plain Mirror, Antiqued Mirror, or Reflector
- Custom materials and finishes available upon request

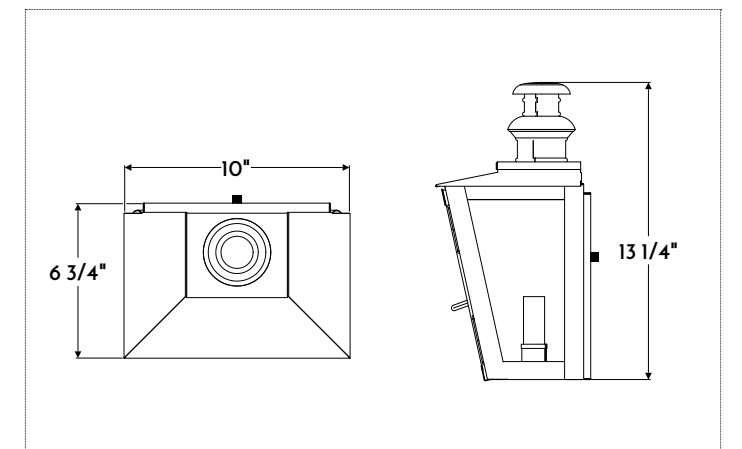
**Filament LED (2-6 watt) bulbs strongly recommended with optional wax sleeves



hmwpa.com



Shown with small dimensions

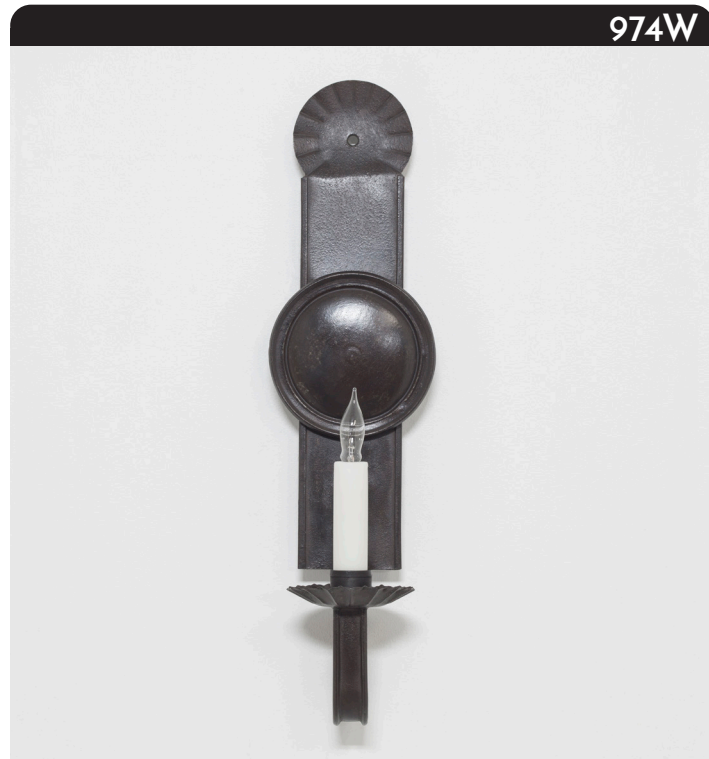


Shown with small dimensions



Ivoryton Wall Sconce

This 18th century inspired single arm wall sconce was one of Scofield's original reproduction designs, created in Ivoryton, CT. Slim by design, the rectangular backplate features a crimped round top dish and bobèche with a handspun reflector.



Shown with an aged tin finish.

SPECIFICATIONS

- UL listed for Dry location (may comply with Damp location when surface mounted to covered ceiling away from rain or sprinklers)
- 2" x 4" junction box

One Size

- 4.875" w x 4.5" d x 17" h
- One Lamp
- 60-watt max** candelabra (E12) socket

Materials

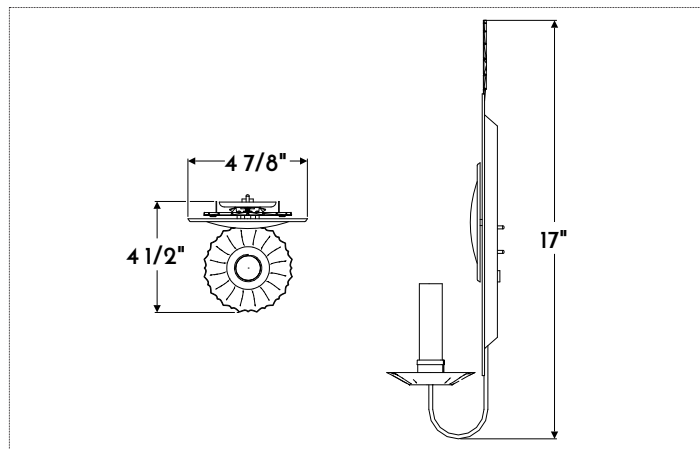
- Tin*

Finishes

- AGTN*

Other Options

- Custom materials and finishes available upon request



*Interior use only

**Filament LED (2-6 watt) bulbs strongly recommended with optional wax sleeves



(610) 518-3999



Deerfield Wall Sconce

This elongated round top sconce is an adaptation from a Scofield original. Featuring a unique flat back fabricated with antiqued hand-cut mirror wedges that magnify a sunrise-esque warm glow throughout any room for both beauty and function.



Shown with an aged tin finish and antiqued mirror.

SPECIFICATIONS

- UL listed for Dry location (may comply with Damp location when surface mounted to covered ceiling away from rain or sprinklers)
- 2" x 4" junction box

One Size

- 5.75" w x 3.125" d x 11.75" h
- Two Lamp
- 60-watt max** candelabra (E12) socket

Materials

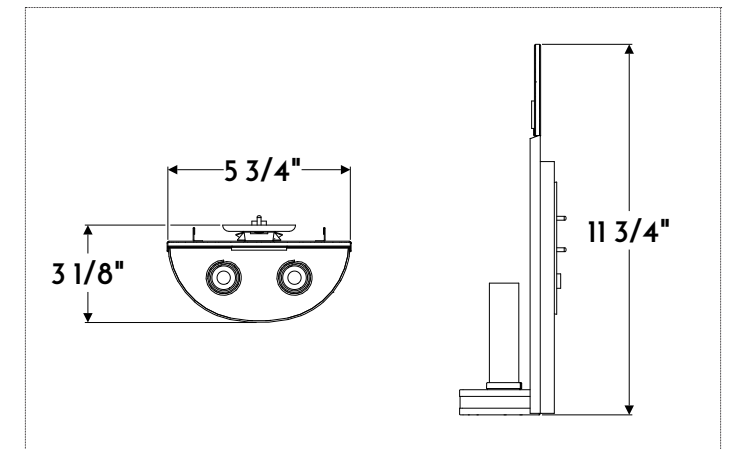
- Tin*

Finishes

- AGTN*

Other Options

- Custom materials and finishes available upon request



*Interior use only

**Filament LED (2-6 watt) bulbs strongly recommended with optional wax sleeves



hmwpa.com



Personalization Options.

For over a half-century, Scofield Lighting has set the standard for combining the best lighting designs of the past and making them relevant for today.

Each piece is handmade to order and ready for your personal touch. Choose everything from the wax coated candle sleeve to the final finish to complement a historical reproduction or a modern masterpiece.

We believe the combination of great design and execution are what make the perfect piece.

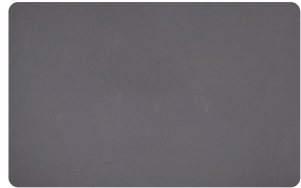
OPTIONS

Copper

Copper finishes are hand-applied with a living finish, also called a patina. Patina allows the metal to shine through to be appreciated in its natural state. Unless sealed with a lacquer, over time, the finish will naturally change into various shades, influenced by factors like weather, touch, time, and exposure to the environment.



NACP (Natural Copper)
Raw copper with a lightly brushed, non-directional finish.



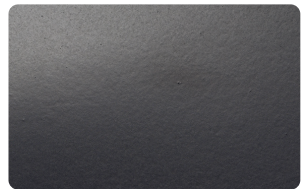
BZCP (Bronzed Copper)
Starting with a matte copper surface, oxidizers are applied to darken the copper to a deep brown-black patina.



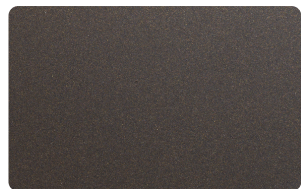
OXCP (Oxidized Copper)
Oxidizers and heat are applied simultaneously to a natural copper surface, accelerating the development of protective verdigris in a range of green and white tones.



NEW BRCP (Brushed Bronzed Copper)
Bronzed copper patina lightly brushed and sealed with a clear satin lacquer.



NEW BLAQ (Black Lacquer)
Acrylic, black-colored lacquer applied generously to raw copper with a sealed satin finish.



NEW BZAQ (Bronze Lacquer)
Acrylic, colored lacquer, carefully selected to match our signature bronzed copper patina with historically inspired brown tones and a sealed satin finish.

As with all hand-applied and natural finishes, they're meant to produce a random pattern for age and usage. Slight variations are possible and often appear more significant when applied to large surfaces. We can't guarantee an identical match of any sample or swatch. Custom finishes available upon request.

Tin

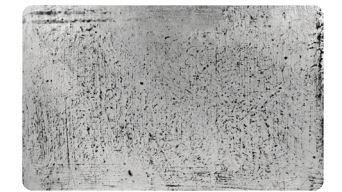
Tin fixtures are finished in Aged Tin, a rich, black-brown finish, designed for indoor use, and treated with rust-resistant aging techniques. A combination of dark wax and natural dirt is applied to add texture and unique character. Decorative gold is gilded to select fixtures with patience and artistry – something no machine can recreate.



AGTN (Aged Tin)



Yellow Gold



White Gold

Hand Painted

Select fixtures include wooden elements that are hand painted using historic and fade-resistant Genuine Old-Fashioned Milk Paint (shown on left). Metal components are painted with comparable Benjamin Moore premium metal-safe interior paint revealing unique, visible strokes (shown on right).



Snow White & Vanilla Milkshake



Mustard & Showtime



Tavern Green & Cedar Green



Sea Green & Mill Springs



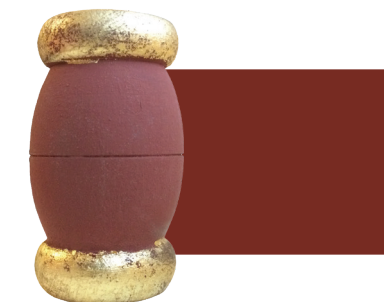
Soldier Blue & Sea Reflections



Federal Blue & Chicago Blues



Lexington & Holiday Wreath



Barn Red & Country Redwood



Pitch Black & Black Ink

OPTIONS

OPTIONS

Glass & Reflectors

Nothing emphasizes authenticity like the wavy imperfections of mouth-blown glass and decorative wedge cut mirror. Whether you prefer simple Plain Glass or Mirror, the animation of Seeded Glass, the secluded elegance of Frosted and Opal Glass, or the subtle distortions of historically accurate Restoration Glass and Antiqued Mirror, each has its own personality and history of its own.



Plain Glass



Restoration Glass



Seeded Glass



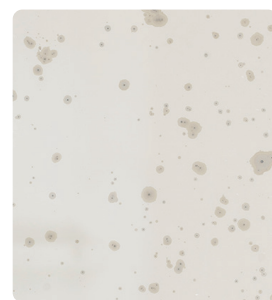
Opal Glass



Frosted Glass



Plain Mirror



Antique Mirror



Pewter Reflector



Brass Reflector

Candle Sleeves

Complete your handcrafted fixture with a smooth, dripless beeswax or cardboard candle sleeve. For a more traditional look, sleeves are available with drips. Thicker Polyresin Dripless or Metal sleeves are also available for more durability and low maintenance. All candelabra fixtures include Dripless Ivory Wax sleeves. Shade variation may occur.

Dripless



White Wax
Ivory Wax
Natural Wax
Ivory Polyresin

Drip



White Wax
Ivory Wax
Natural Wax
Honey Amber Wax

Cardboard



White
Beige

Shades & Clusters

Select single lamp lanterns include Straight or Traditional hand-blown glass shades to complete the historical adaptation design. Three lamp lanterns are fabricated with a hanging cluster.



Traditional Chimney



Straight Chimney



Hanging Cluster

All Chandeliers, Pendants and Hanging Lanterns include a 5" canopy and hook or 36" chain. Select ceiling fixtures include round tube hanger in lieu of chain or hook.

All Anniversary Wall Lanterns and Sconces are fabricated with a direct mount.

- 1. Tin Canopy
- 2. Copper Canopy
- 3. Tin Chain
- 4. Copper Chain
- 5. Brass Chain
- 6. Tin Hook
- 7. Copper Hook



Tin Chain Assembly



Copper Hanger Assembly



Tin Hook Assembly

Craftsmanship

Our award-winning team of artisans has decades of experience handcrafting each fixture using traditional techniques and authentic tools. We are dedicated to selecting only the finest materials and meticulously examining every detail to guarantee top-notch quality.

Production

Scofield fixtures are never produced in bulk. Each historic lighting design is handmade in-house using original tools, methods, and finishes. These ancient practices allow us to produce strong, durable lighting, designed to last.

Finishing

All Scofield designs are authentic reproductions made from copper, tin, or wood and finished in either a patina, wax, or paint. As with all hand-applied finishes, variations can occur.

Copper fixtures are ideal for both interior and exterior projects and are finished with a "living finish", also called a live patina. Patina offers a unique perspective on the beauty of metal, showcasing its true essence through an array of shades and patterns. Unlike paint, patina allows the metal to shine through to be appreciated in its natural state. Unless sealed with a lacquer, over time, the finish will naturally change into various shades, influenced by factors like weather, touch, time, and exposure to the environment.

Fixtures fabricated from tin are specifically designed for indoor use and treated with rust-resistant aging techniques. Fixtures are intentionally soaked in a mixture of acids and stripped of a coating to reveal the natural metal. Afterward, they are dipped in blackened steel and left to air dry. A combination of dark wax and natural dirt is applied to the fixture to add texture and unique character.

UL Certification

All fixtures are electrified with virtually invisible wiring, UL tested, certified, and marked for damp, dry, or wet locations.

Care & Maintenance

Gently clean all Scofield Lighting fixtures with a soft cloth.

Samples

We offer, for purchase, a comprehensive binder of standard metal and paint finishes. This binder can be fully rebated against purchases, subject to certain limitations. Individual samples of standard and custom finishes are available for approval at a nominal cost.

Distribution

Scofield Lighting fixtures are distributed by Remains Lighting throughout the nation assisting with pricing, lead times, and showroom locations.

Additional Products

The perfect complement to Scofield Lighting fixtures is period-specific hardware and reproduction lighting. Ask about our family of handcrafted brands by Heritage Metalworks including HMW Forge Hardware and Heritage Traditions Lighting.



2089 Bondsville Rd. Downingtown, PA 19335
(610) 518-3999 | hmwpa.com



A family of handcrafted brands made by Heritage Metalworks.