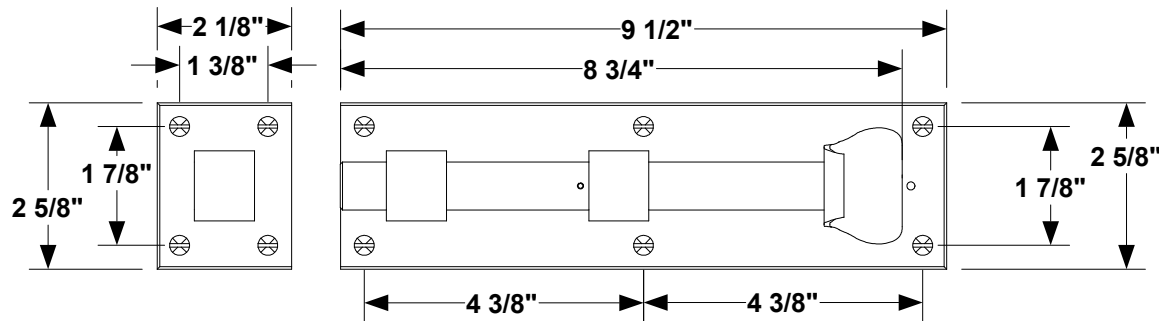


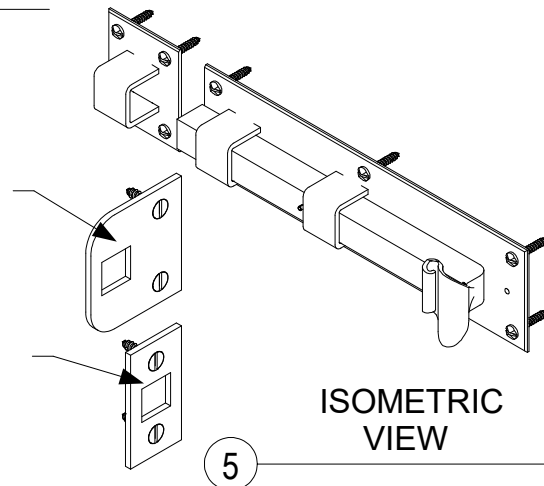
1 TOP VIEW



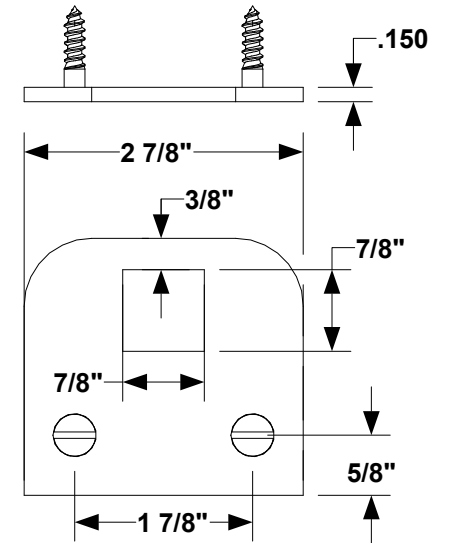
2 FRONT VIEW

OPTIONAL MORTISE  
KEEPER

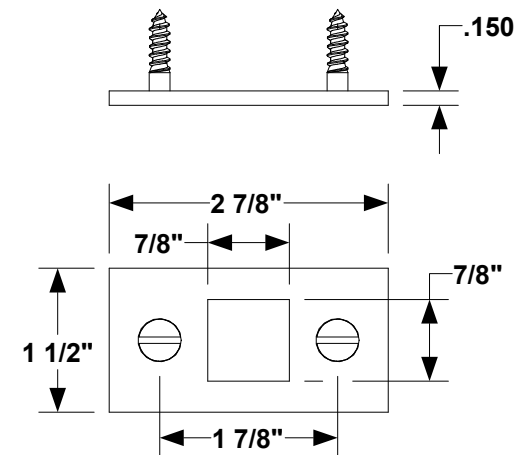
OPTIONAL FLOOR  
KEEPER



5 ISOMETRIC  
VIEW



3 MORTISE KEEPER  
OPTION



4 FLOOR KEEPER  
OPTION

NOTE: Items are hand made one at a time.  
There may be slight variations in measurement  
and tolerances when comparing to actual Cad  
drawing.

CONFIDENTIALITY STATEMENT. The information contained in this Drawing, including attachments, is confidential information property of  
Heritage Metalworks LLC., HMW Forge and Scofield lighting. The information is intended for use solely by the individual or entity named in the  
message and or email sent with. Any unauthorized review, printing, copying, reproduction or distribution of such information to other parties is  
prohibited. If you are not an intended recipient of this, please notify Heritage Metalworks LLC. by reply e-mail and delete from your system.



Heritage Metalworks LLC  
HWIR220  
Dog Eared Slide Bolt (9.5")

DATE:5/2/2022 3:23 PM  
DATE REV:  
DRAWN BY: JTH  
FINALIZED BY: