



# HWIR307

## Continental Pull

3" x 9"

Forged iron continental pull with lift bar and keeper.



Shown with a dark wax iron finish.

### SPECIFICATIONS

#### Finishes:

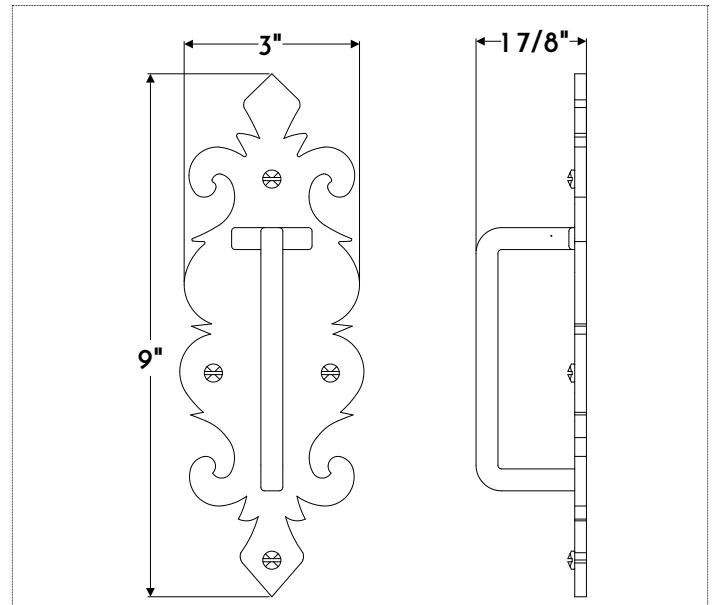
- BLIR, DWIR, NAIR, RUIR, BLAQ

#### Standard Components:

- Forged Iron Pull
- (4) Screws

#### Additional Product Information:

- Drawings, Installation Instructions, and Hardware Spec Order Form available upon request.
- \*Must complete **Spec Order Form** when ordering.



Items are handmade. Slight variations in size may occur.

FINISHES	BRASS	IRON	NICKEL
	DABS Dark Antiqued*	BLIR Satin Black Exterior	PONI Polished
	LABS Light Antiqued*	DWIR Dark Wax*	BRNI Brushed
	PUBS Polished Unlacquered	NAIR Natural	AQNI Antiqued Polished
	PLBS Polished Lacquered	RUIR Rustic	
	BRBS Brushed*	BLAQ Black Lacquer	
	BZBS Bronzed*		

\*Clear coat finish available