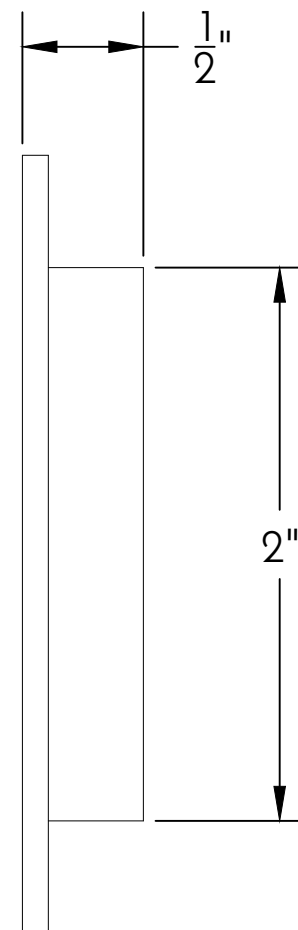


1 FRONT VIEW



2 SIDE VIEW

NOTE: Items are hand made one at a time.  
There may be slight variations in measurement  
and tolerances when comparing to actual Cad  
drawing.

CONFIDENTIALITY STATEMENT. The information contained in this  
Drawing, including attachments, is confidential information property of  
Heritage Metalworks Ltd., HMW Forge and Scofield lighting. The  
information is intended for use solely by the individual or entity named in  
the message and or email sent with. Any unauthorized review, printing,  
copying, reproduction or distribution of such information to other parties  
is prohibited. If you are not an intended recipient of this, please notify  
Heritage Metalworks Ltd. by reply e-mail and delete from your system.



Heritage Metalworks Ltd.

VEHW207

BRASS FLUSH PULL W/ THUMB TURN

Date: 8-20-18

Date Revised: 12-19-18

Drawn By: JK

Status: Original Sketch/CAD

Drawings Finalized By: